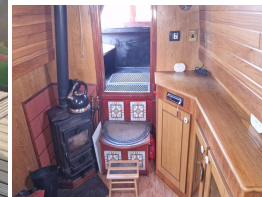




Shardlow, Derbyshire, East  
Midlands  
DE72 2GL  
United Kingdom  
Mobile: 07721 382619  
Telephone: 07721 382619

**Kendal Boats - 57ft Semi Trad Narrowboat called Trundle**

**£ 68,000**



**Description**

'Trundle' 57ft by 6ft10ins, semi trad narrowboat, built 2007 by Kendal Boats, powered by an Isuzu 42hp inboard diesel engine. Entering from the bow is the open plan main cabin allowing free standing furniture. Currently with 2 x arm chairs, a small circular table and drawer unit, shelving, a corner unit extending down the gunnel giving additional cupboard storage, central heating radiator, and a solid fuel stove mounted on a tiled plinth & surround. Moving down the boat is a Pullman dinette, this offers comfortable seating with storage under and makes guest bed. It also has a side hatch giving additional light and ventilation with a central heating radiator opposite. The galley has units running port & starboard comprising of a bowl & a half stainless steel sink & drainer set in Corian work-tops with splash-back. In addition the boat has a washing machine, fridge, wine rack, bulkhead cabinets, plate rack, a second side hatch, and ample cupboard storage. It has a cross bathroom with a quadrant shower unit, hand wash basin set in Corian again matching the galley, heated towel rail, mirror, shelving, & Thetford cassette toilet. Finally the bedroom which has a fixed double with storage under, overhead lockers, wardrobe and drawer unit, storage under rear steps, and a central heating radiator. This craft is one owner from new, extremely clean and ready for use, either for leisure or residential purposes. It has 12 & 240v electrics, inverter, twin alternators, immersion heater, Webasto diesel central heating, and a current BSC 2 years approx. Priced at £68000. Viewing by appointment at our Shardlow Marina Sales office, For further information or to arrange a viewing ring Chris 07799 216704 or David 07721 382619.

<b>Sales status:</b> under offer	<b>Manufacturer:</b> Kendal Boats
<b>Model:</b> 57ft Semi Trad Narrowboat called Trundle	<b>Year built:</b> 2007
<b>Length:</b> 17.37 m	<b>Beam:</b> 2.06 m
<b>No. of previous owners:</b> 1	<b>Condition:</b> as new
<b>Sale Type:</b> Used	<b>Sale:</b> On behalf of customer
<b>Propulsion:</b> Inboard	<b>Steering:</b> Tiller steering
<b>Engine manufacturer:</b> ISUZU	<b>No. of engines:</b> 1
<b>HP:</b> 42	<b>Fuel:</b> Diesel

**Material hull:** Steel

**Material deck:** Steel

---

---